

INSTALLATION INSTRUCTIONS

DESCRIPTION: Fender Eliminator Kit
PART NUMBER: BS2-F16E0-V0
MODEL: '17~ FZ-09



⚠ WARNING

Please read and understand these instructions completely before installation to avoid possible injury, or damage to the accessory or vehicle.

NOTICE:

Installation of this kit requires a torque wrench and should be performed by an authorized Yamaha dealer or a qualified mechanic.

WARRANTY INFORMATION:

In the United States, see your Yamaha dealer for a copy of the Yamaha Genuine Parts and Accessories Limited Warranty.

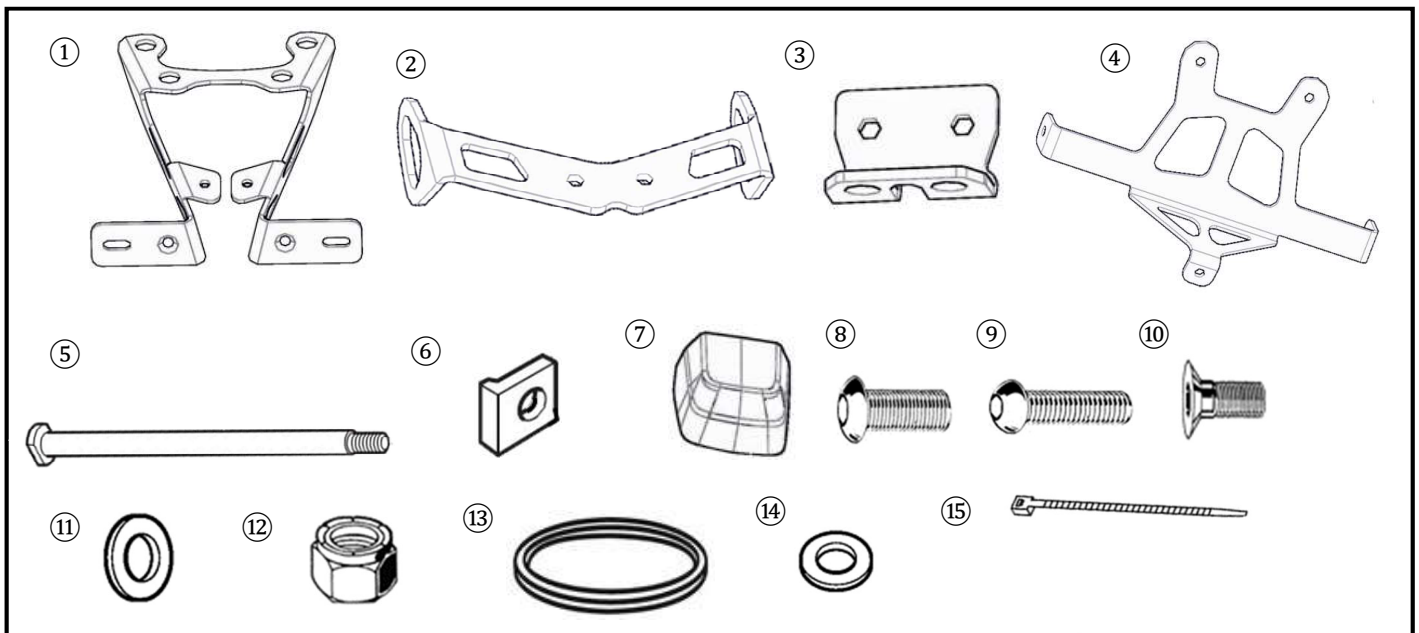
DEALER OR INSTALLER:

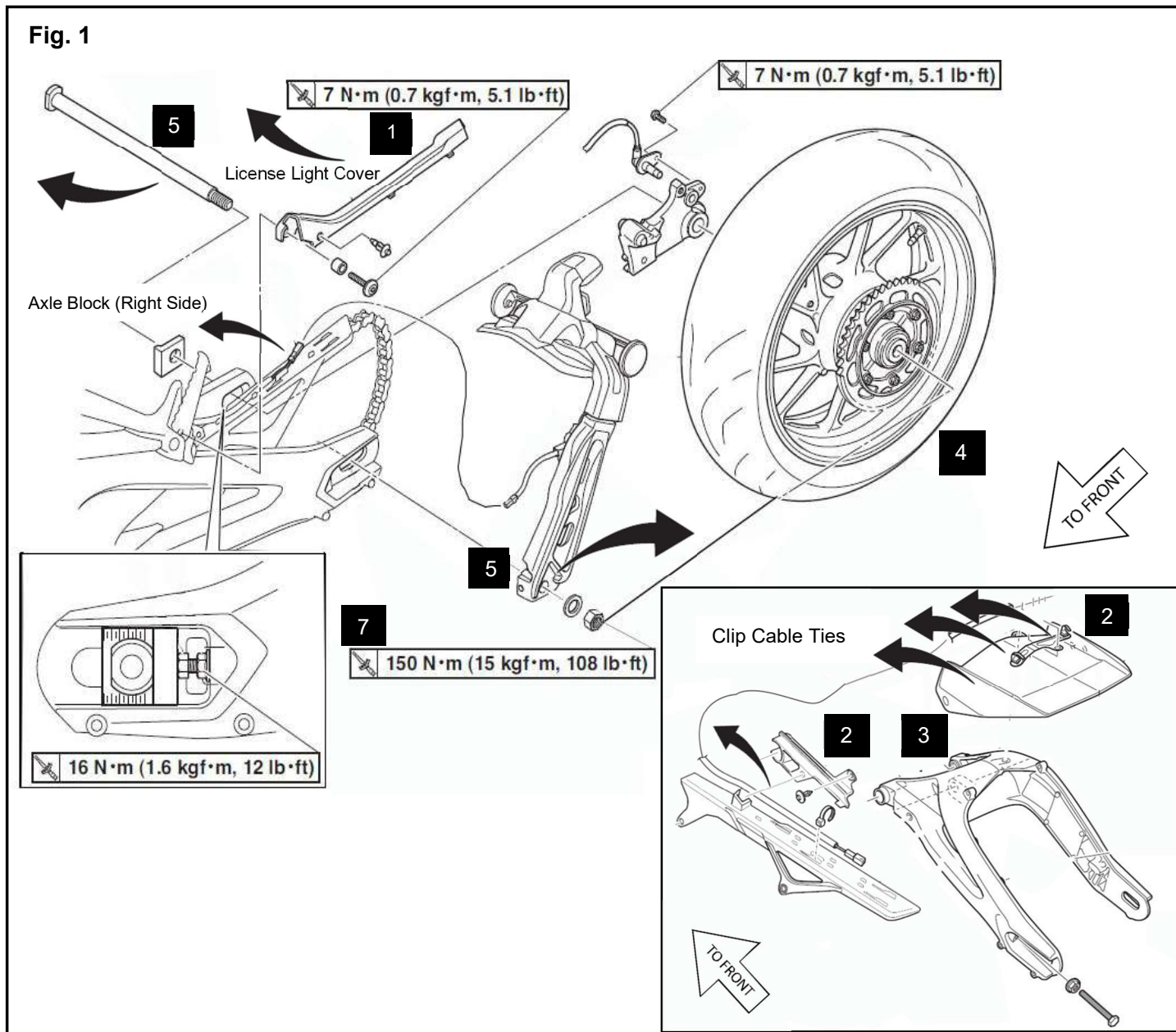
These instructions contain important information for future reference and *must* be given to the customer.

PARTS LIST:

No.	Part Number	Description	Qty
--	BS2-F16E0-V0	Fender Eliminator Kit	--
①	*	Main Bracket	1
②	*	Turn Signal Bracket	1
③	*	Light Bracket	1
④	*	Plate/Reflector Bracket	1
⑤	*	Axle	1
⑥	*	Left Axle Block	1
⑦	*	LED Light Cover	1
⑧	*	M6x16mm Button Head Bolt	2
⑨	*	M6x20mm Button Head Bolt	2
⑩	*	M6x12mm Countersunk screw	2
⑪	*	M6 Washer	8
⑫	*	M6 Nyloc Nut	6
⑬	*	Square Profile O-Ring	2
⑭	*	Nylon Washer	4
⑮	*	Cable Tie	2

* Part supplied with kit only and not available separately.





PREPARATION:

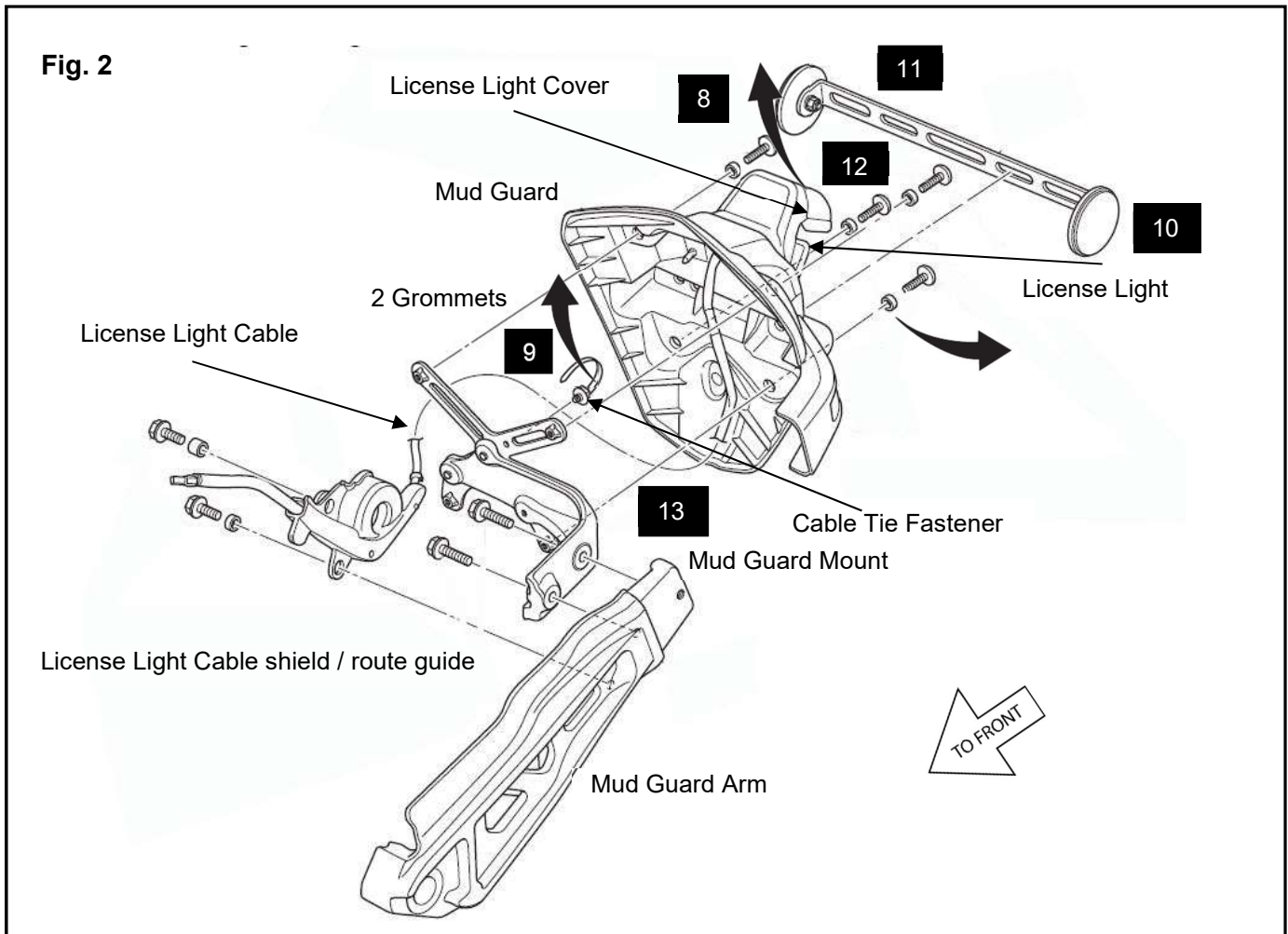
- Stand the motorcycle on a secure level surface.
- Clean mount surfaces before starting the install.
- Refer to the Service Manual for illustrations, diagrams, and torque settings.

Note: This installation will require a rear stand in order to lift and stabilize the rear wheel.

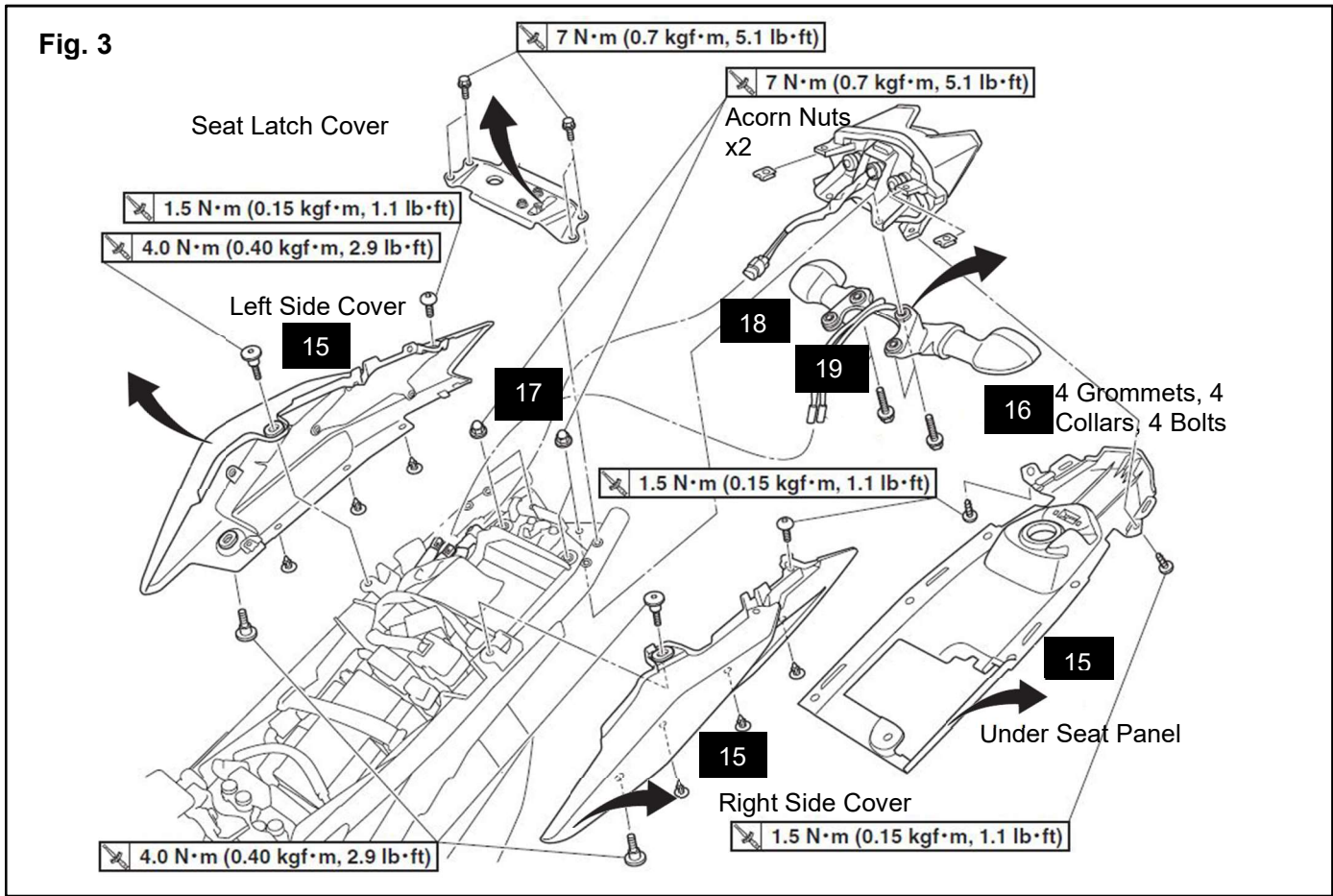
INSTALLATION:

- 1 Remove the plastic cover for the license plate light harness. This cover is held in place by a plastic rivet and a hex bolt with collar. Retain the parts for reuse. (Fig. 1)
- 2 Cut and remove the stock cable ties that secure the license plate light cable across the front of the rear fender. Cut the cable tie that holds the license plate light cable to the chain guard and disconnect license plate light cable. (Fig.1 lower right side)
- 3 Reinstall the license light cable cover with the stock plastic rivet and stock button head hex bolt w/collar. Torque the bolt to 7Nm, (0.7 m-kg or 5.1 lb-ft).
- 4 Use a rear wheel stand and lift rear wheel off ground. Loosen and remove the axle nut and washer.

TIP: Before removing the axle place a support (wood or a block) underneath the tire. It makes re-installation of the axle and wheel a bit easier.

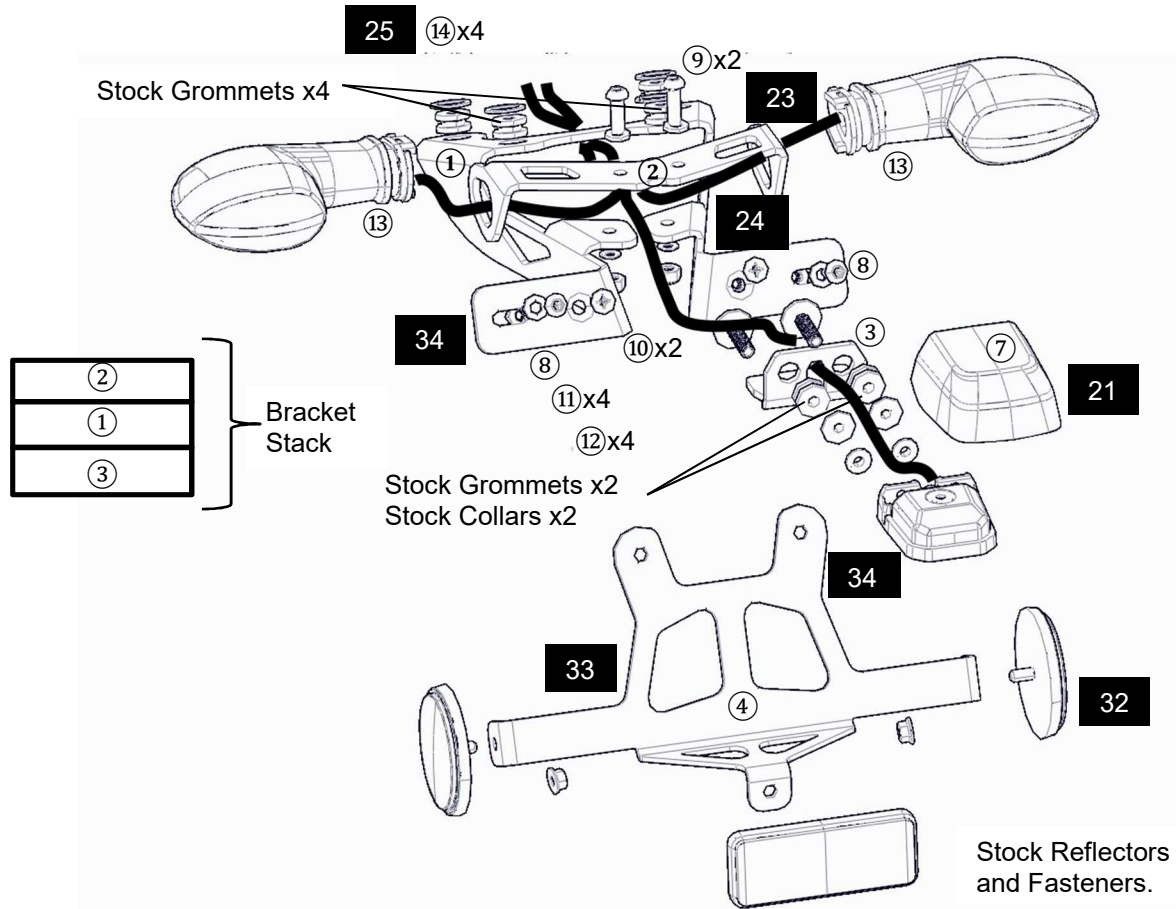


- 5** Remove the mudguard arm and the stock axle and replace it with the provided (5) Axle and (6) Left Axle Block. (Fig. 1)
- 6** If needed, adjust rear wheel alignment (refer to the service manual), and adjust the position of the wheel to get the proper drive chain tension. (5.0–15.0 mm (0.20–0.59 in) slack)
- 7** Torque the Rear wheel axle nut to 150 Nm (15 m·kg or 108 ft·lb) (Fig. 1)
- 8** Remove the four bolts that hold the mudguard to the mudguard mount. (Fig. 2)
- 9** Pry off the cable tie fastener that secures the license light cable to the mudguard. (Fig. 2.)
- 10** Remove the stock reflectors and retain all hardware for reuse. The bracket that holds the reflectors to the mudguard mount is not reused. (Fig. 2)
- 11** Remove the two plastic rivets that hold the license light cover to the mud guard.
- 12** Remove the license light assembly from the mudguard. Retain the two stock grommets, fasteners, and collars for reuse
- 13** Remove the mud guard mount from the mud guard arm. Remove the License Light Cable shield / route guide. The license light cable should now be free from the mudguard arm. (Fig. 2)
- 14** Remove the Seat.
- 15** Remove the left and right rear side covers. Remove the under seat panel – it is held in place by two bolts and a group of plastic rivets. (Fig. 3)
- 16** Remove the four bolts that hold the seat latch cover in place and retain for reuse. (Fig. 3)
- 17** Remove the two acorn nuts that secure the rear taillight assembly to the frame. The rear taillight and the rear turn signal bracket are now free. (Fig. 3)
- 18** Disconnect and remove rear turn signals and brackets. Note which side each light came from and routing of the wires. Retain left and right turn signal locking plates for reuse. (Fig. 3)



- 19 Remove the four grommets and collars from the stock turn signal bracket. Retain them for reuse.
- 20 Slip on the (13) O-rings onto each turn signal. Then, install the turn signals onto the (2) Turn Signal Bracket. Install the stock locking plate to each turn signal to lock in place. Ensure the O-rings are in the channel and were not twisted during installation. (Fig. 6)
- 21 Install the stock license light and (7) LED light cover to the (3) Light Bracket using the stock collars, grommets and stock hex bolt (removed earlier). Torque the bolts to 1.5Nm (0.15 m·kg or 1.1 lb·ft) (Fig. 7)
Note: Wiring harness should exit to the bottom of the bracket.
- 22 Install Center Cover into the Main Bracket. (Fig. 5)
- 23 Install the (2) Turn Signal Bracket and (3) Light Bracket to the (1) Main Bracket with two (9) M6x20mm Button Head, four (11) M6 Washers, and two (12) M6 Nyloc nuts. Route turn signal wires through the (1) Main Bracket as shown in Fig.4.
- 24 Torque the (9) M6x20mm Bolts to 4Nm (0.4 m·kg or 2.9 ft·lb).
- 25 Install the four grommets from the stock turn signal bracket onto the (1) Main Bracket along with the four (14) Nylon Washers provided. Install the collars into the grommets. (Fig. 3)
- 26 Loosely install (1) Main Bracket assembly in place of the stock turn signal bracket using the stock fasteners. Route all wires into the opening in the tail. (Fig. 3)
- 27 Complete routing of license plate light harness from the swingarm along the main cable bundle to the rear of the tail. Use (15) Cable Ties to secure the wiring as needed. Re-connect all connectors and **test proper function of turn signals and brake lights before proceeding**. *The connectors are wrapped with in a plastic sheet with a Velcro seal. (Fig. 8)
- 28 Torque the four stock bolts (the acorn nut ones) to 7Nm (0.7 m·kg or 5.1 lb·ft). (Fig. 3)
- 29 Install the stock left rear side cover, right rear side cover, and taillight assembly with the stock fasteners. (Fig. 3)
Note: There are fittings on the black taillight assembly that 'hook' into small tabs on both side covers.
- 30 Install the Seat Latch Cover with the four stock bolts (Fig. 3).
- 31 Install the Seat.
- 32 Install the stock reflectors to the (4) Plate/Reflector Bracket with the stock nuts. (Fig. 5)
- 33 Install the (4) Plate/Reflector Bracket to the (1) Main Bracket with two (10) M6x12mm Countersunk Screws and two (12) M6 Nyloc Nuts. Torque to 7Nm (0.7 m·kg or 5.1 lb·ft) (Fig. 4)

Fig. 4



34 Install the license plate to the Plate/Reflector Bracket with 2 (8) M6x16mm Button Head Bolts, 4 (11) M6 Washers, and 2 (12) Nyloc Nuts. Torque to 7Nm (5.1 ft-lbf) (Fig. 4)

Fig. 5

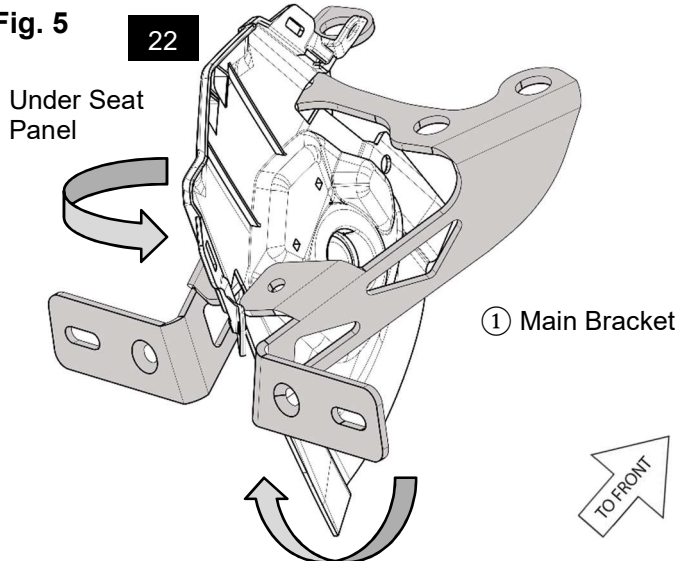
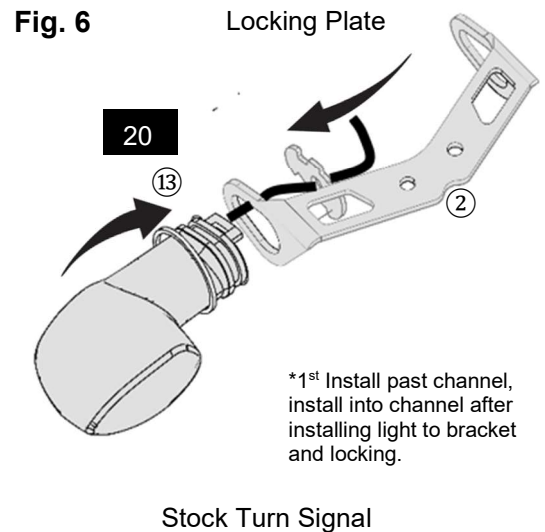
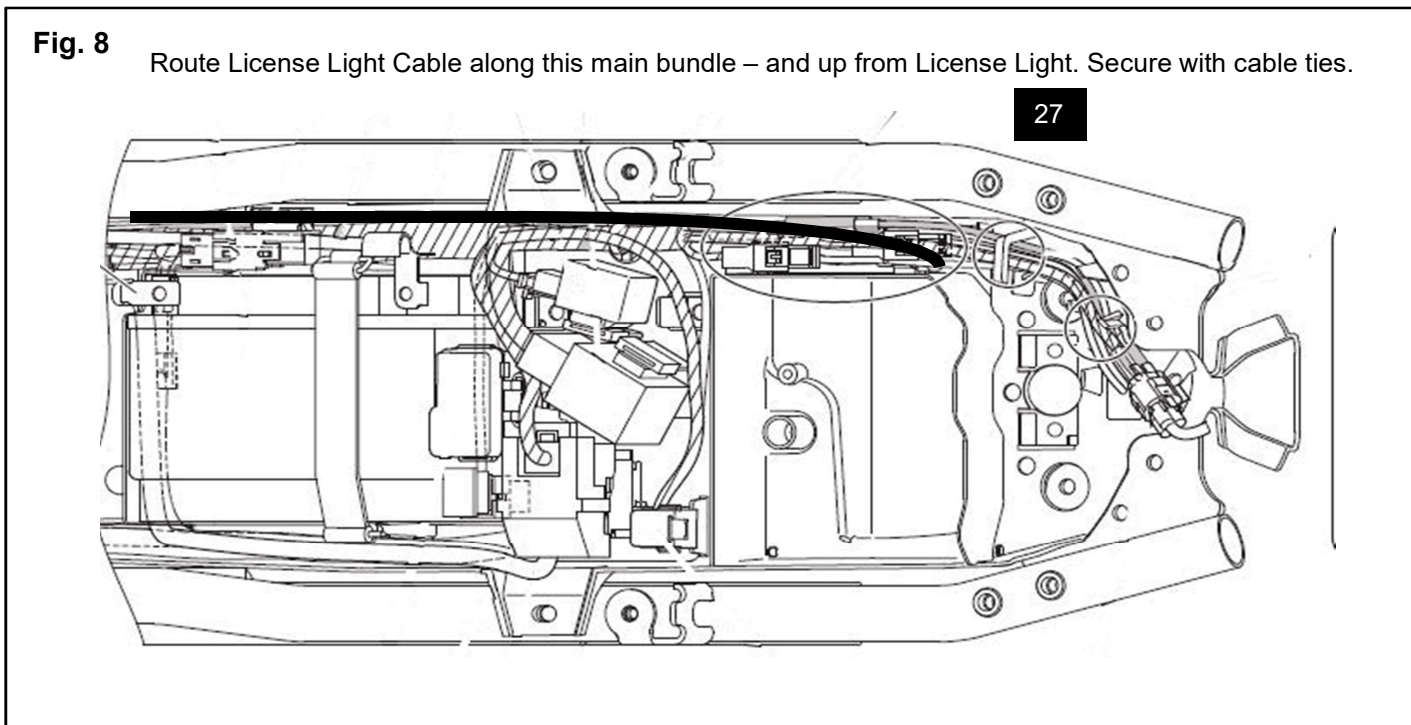
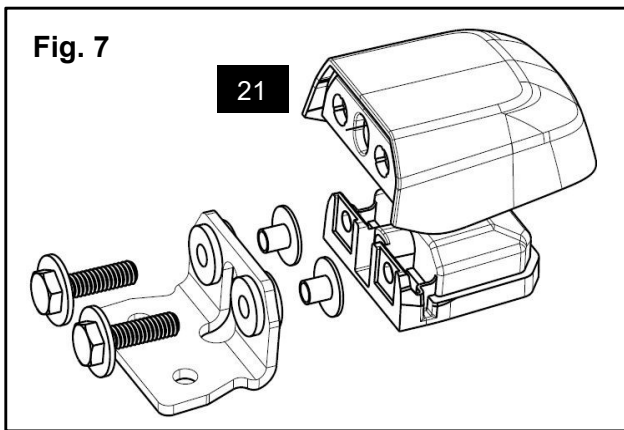


Fig. 6





MAINTENANCE:

Periodically, check torque on all hardware. If loose hardware is found, re-torque to specification.

CARE AND CLEANING:

Clean painted metal parts with a clean soft cloth and mild soap and water solution. Rinse and dry.

CUSTOMER SERVICE:

For further information see your Yamaha dealer.

ESTIMATED TIME TO INSTALL: 1.0 HRS.